

## ROMPOX® - D1 on 500 m² of paved area – tradition meets modern design

As part of the construction of the new Centre for Islamic Theology (ZITH) at the University of Tübingen, work on paving and jointing began in 2022, focusing on the entrance area and rooftop terrace. A total of 1,140 m² of traditional clinker paving (format 24 × 11.5 cm) was installed, with around 500 m² jointed using ROMEX® systems. The result is a striking contrast between traditional paving and the modern architectural style of the new building.

### Initial Situation and Requirements

The main challenge was to implement a paving solution that would both complement the contemporary building and meet functional demands for durability, drainage, and weather resistance. In particular, the rooftop terrace required enhanced frost protection and long-term stability.

### ROMEX® Solution

After careful planning, the project team opted for ROMPOX® - D1, a two-component epoxy resin jointing mortar in the colour "neutral". Its high flowability ensured efficient application and complete filling of the joints, which measured approx. 1 cm in width and 3–4 cm in depth. The result was a uniform, highly durable joint structure. The clinker paving was laid on a 50 cm frost protection layer and a 5 cm bedding of crushed stone chippings – ensuring a strong and long-lasting base. The ROMEX® technical team and local representatives closely supervised the application to guarantee top-quality results.

### Key Features & Success Factors

- Aesthetic fusion of traditional paving and modern architecture
- Efficient jointing process using flowable 2K epoxy mortar
- Excellent resistance to frost, moisture, and mechanical stress
- Professional technical support from ROMEX®

### Conclusion

The Centre for Islamic Theology in Tübingen demonstrates how traditional materials can be reimaged through modern jointing technologies. The combination of visual refinement, modern construction, and technical reliability stands as a strong example of how old and new can be successfully united in public spaces.

## ROMPOX® - D1 on 500 m<sup>2</sup> of paved area – tradition meets modern design



Precise clinker laying on prepared base layer



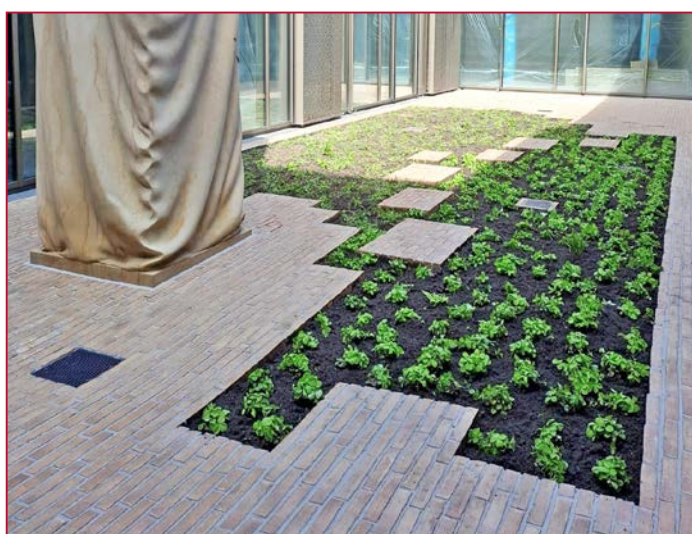
Application of ROMPOX® - D1 neutral with efficient distribution system



Processing of the joint mortar according to the instructions of the ROMEX® technician on site



Immediately after sweeping, a clear joint pattern is visible



Harmonious interplay between paving and modern building architecture



Detailed view of the finished jointed surface – functional and well thought-out design



**ROMEX® GmbH**

Mühlgrabenstraße 21, 53340 Meckenheim | +49 (0) 2225 70954-20 | [sales@romex.de](mailto:sales@romex.de) | [romex.de](http://romex.de)

Follow us

