



950 m² Stone Carpet with ROMPOX® - 201 DEKO UV – Completed in Just One Week

As part of renovation works at the German Hygiene Museum in Dresden, a large-scale stone carpet surface was installed using the ROMEX® system in spring 2025. The objective was to create a visually appealing, durable, and weather-resistant surface that met both aesthetic and functional requirements.

Initial Situation and Requirements

Prior to this, several surface systems from other providers had been presented to the client but failed to meet the expectations in terms of quality, design, and processing. The architect and the client were looking for an innovative, UV-resistant solution that would integrate seamlessly into the architectural concept.

ROMEX® Solution

The final choice was ROMPOX® - 201 DEKO UV – a decorative resin binder system for stone carpet surfaces offering excellent UV and color stability. Following material sampling and close coordination with both the architect and the contractor STL Böden + Design / ASP Steffen Lorenz, the project was implemented in record time. In total, 117 units of ROMPOX® - 201 UV (30 kg each) were used. The surface of approximately 950 m² was applied at a thickness of about 5 cm – completed within only seven days. On-site technical support was provided by a ROMEX® application specialist, ensuring smooth execution and high-quality results.

Key Aspects & Success Factors

- Rapid execution with consistent quality
- Close cooperation between sales, technical support, and applicator
- High-performance, UV-resistant system solution

Conclusion

The project at the German Hygiene Museum Dresden is a showcase for efficient and collaborative implementation using premium ROMEX® systems. The combination of expert technical support, rapid response, and high-performing products resulted in a strong, on-time outcome – delivered at the highest level.

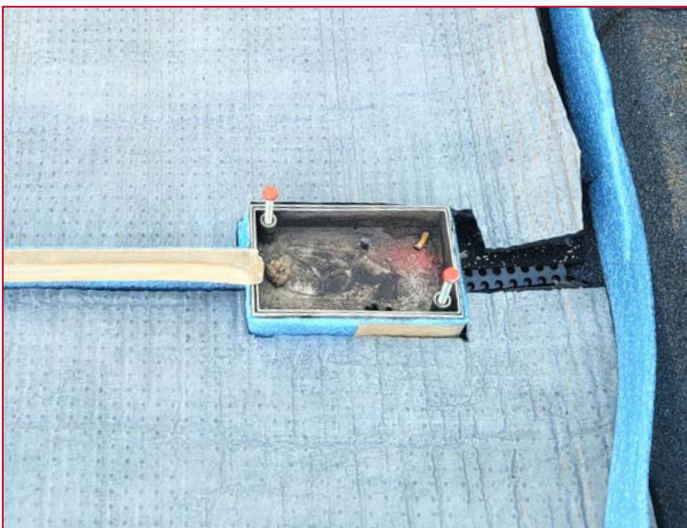
950 m² Stone Carpet with ROMPOX® - 201 DEKO UV – Completed in Just One Week



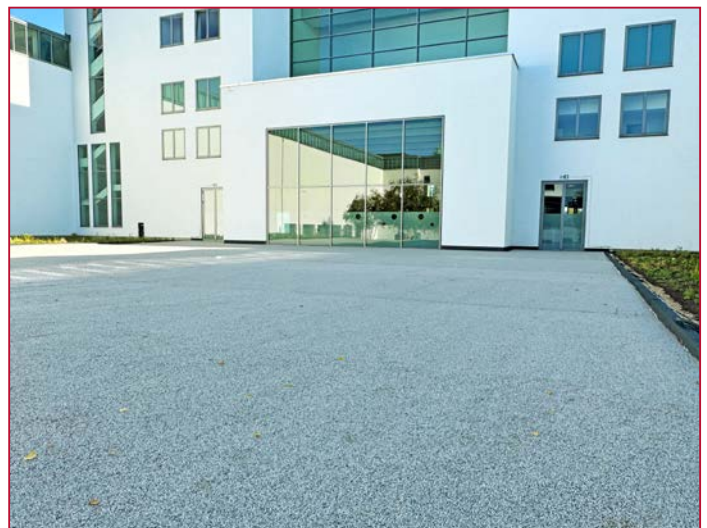
Large construction sites require large mixers



Geotextile as a separating layer under the gravel



Edge insulation strips on building and rising components



Finished surface



Staircase with seating



2/5 mm gravel