



## 9,000 m<sup>2</sup> Heavy-Duty Paving jointed with ISATEC® - FLEX

With the development of Europaplatz, a vibrant new urban district has emerged in the heart of Heidelberg, combining residential, commercial, and leisure spaces in a dynamic city environment. The central plaza, covering approximately 9,000 m<sup>2</sup>, forms the core of the quarter. Officially opened in September 2024, it serves as a forward-looking example of multifunctional urban design.

### Initial Situation and Requirements

The plaza surface was constructed using heavy-duty paving stones in the format 60 × 60 × 16 cm. Due to the unbound construction method, a rigid jointing solution was not feasible. Nevertheless, the project demanded the highest standards in terms of durability, ease of maintenance, long-term performance, and water permeability.

### ROMEX® Solution

Following intensive coordination between the planning office, the City of Heidelberg, the executing company Gramenz GmbH, and the ROMEX® project team, the decision was made to use ISATEC® - FLEX – a tough-elastic jointing compound specifically designed for unbound construction methods. It combines several crucial advantages: its elastic formulation reliably compensates for dynamic loads; its permeability prevents standing water and promotes natural drainage. Additionally, the material is resistant to mechanical street cleaning and therefore ideally suited for high-traffic urban areas. Thanks to its long-term stability, ISATEC® - FLEX significantly reduces maintenance requirements and helps preserve a consistently clean appearance. The installation was carried out by trained professionals from Gramenz GmbH. Timely project completion was made possible through close collaboration among all parties involved.

### Key Features & Success Factors

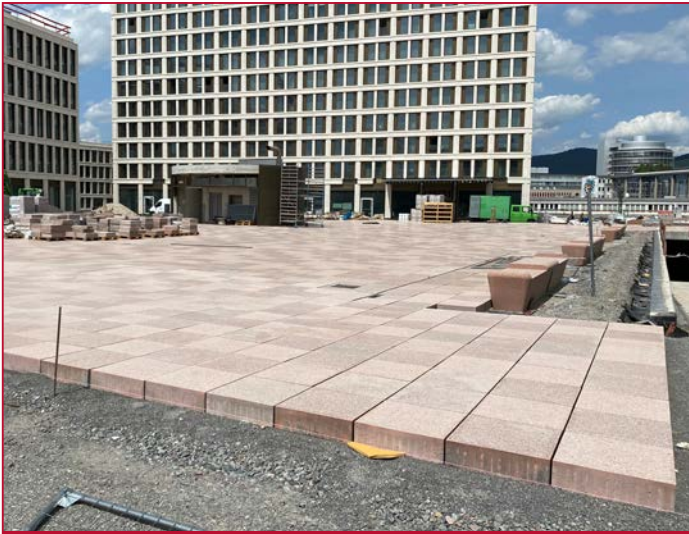
- Innovative jointing solution for unbound paving systems
- Sustainable, low-maintenance system for public spaces
- Combination of architectural ambition and technical performance
- Strong cooperation between planning, execution, and product development

### Conclusion

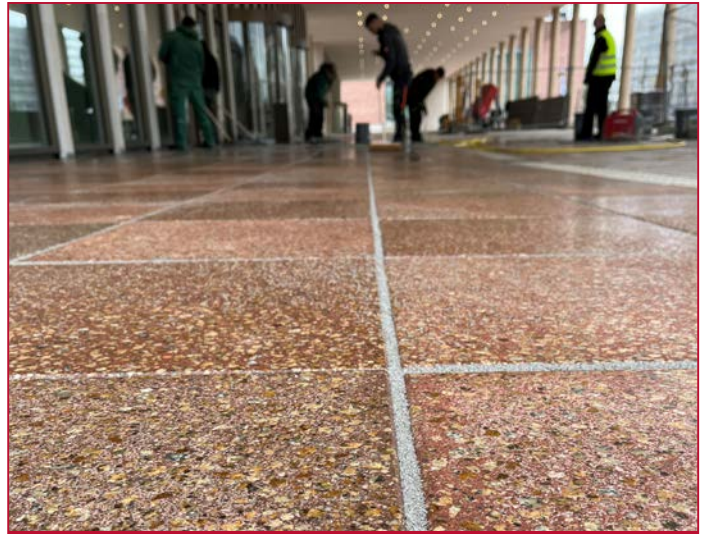
Europaplatz Heidelberg exemplifies future-oriented urban design with a focus on both aesthetic and functional quality. With ISATEC® - FLEX, a modern, resilient, and visually refined public square was created – durable, easy to maintain, and ideally suited to everyday urban use.



## 9,000 m<sup>2</sup> Heavy-Duty Paving jointed with ISATEC® - FLEX



Heavy-duty paving laid in an unbound construction



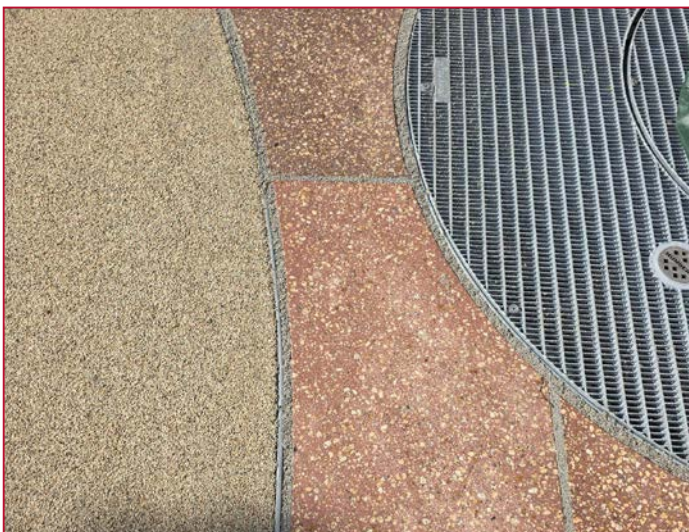
Processing of the flex joint by a qualified contractor



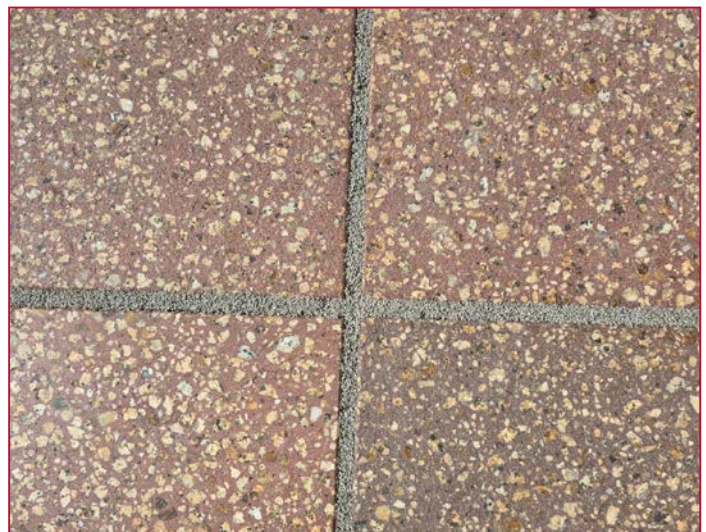
High point loads are no problem for the flexible joint



9,000 m<sup>2</sup> of jointed paving



Cleanly jointed fixtures



The colour of the joint is neutral